



The Princess Margaret  
Cancer Foundation \* UHN

**QUEST**

# STREAM ASSET GUIDE



# WEBCAM

PNG asset. Place over your current webcam as an image source in OBS.

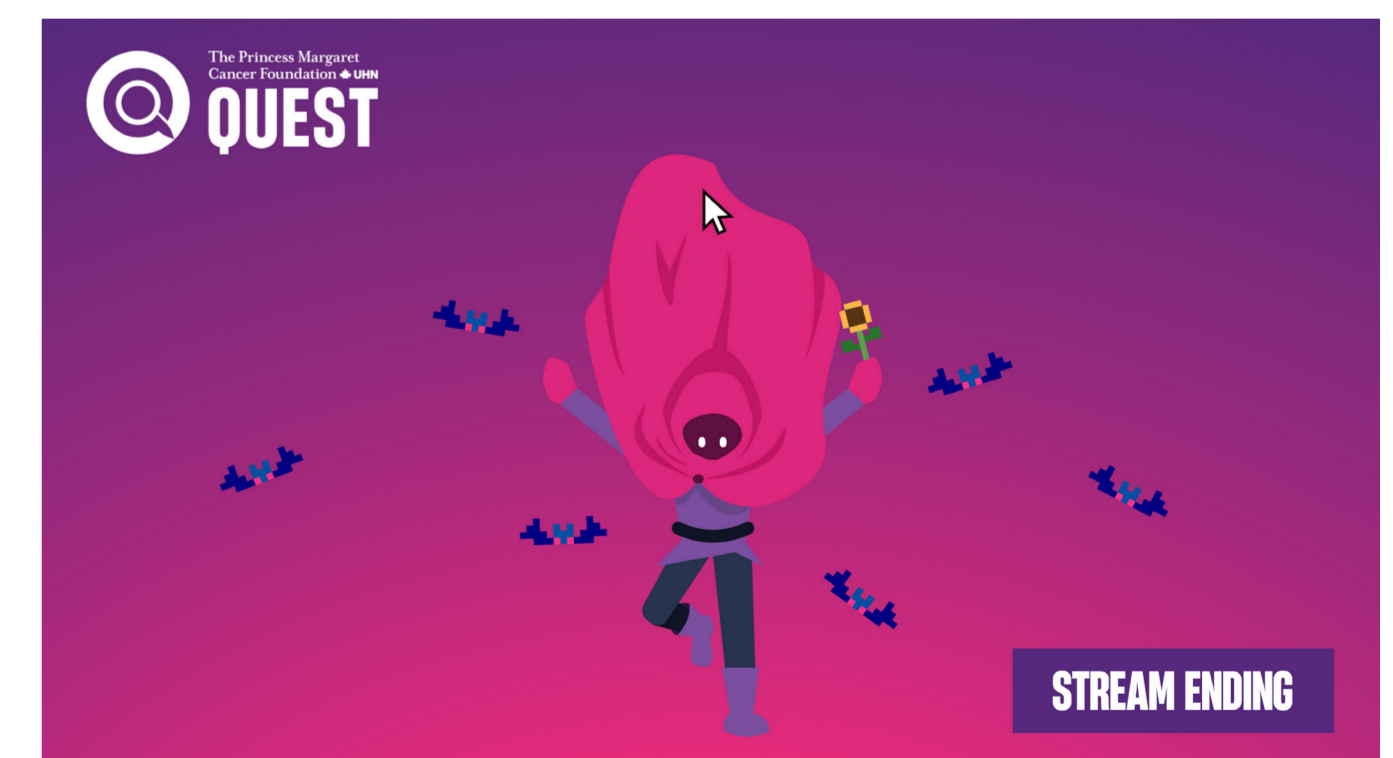
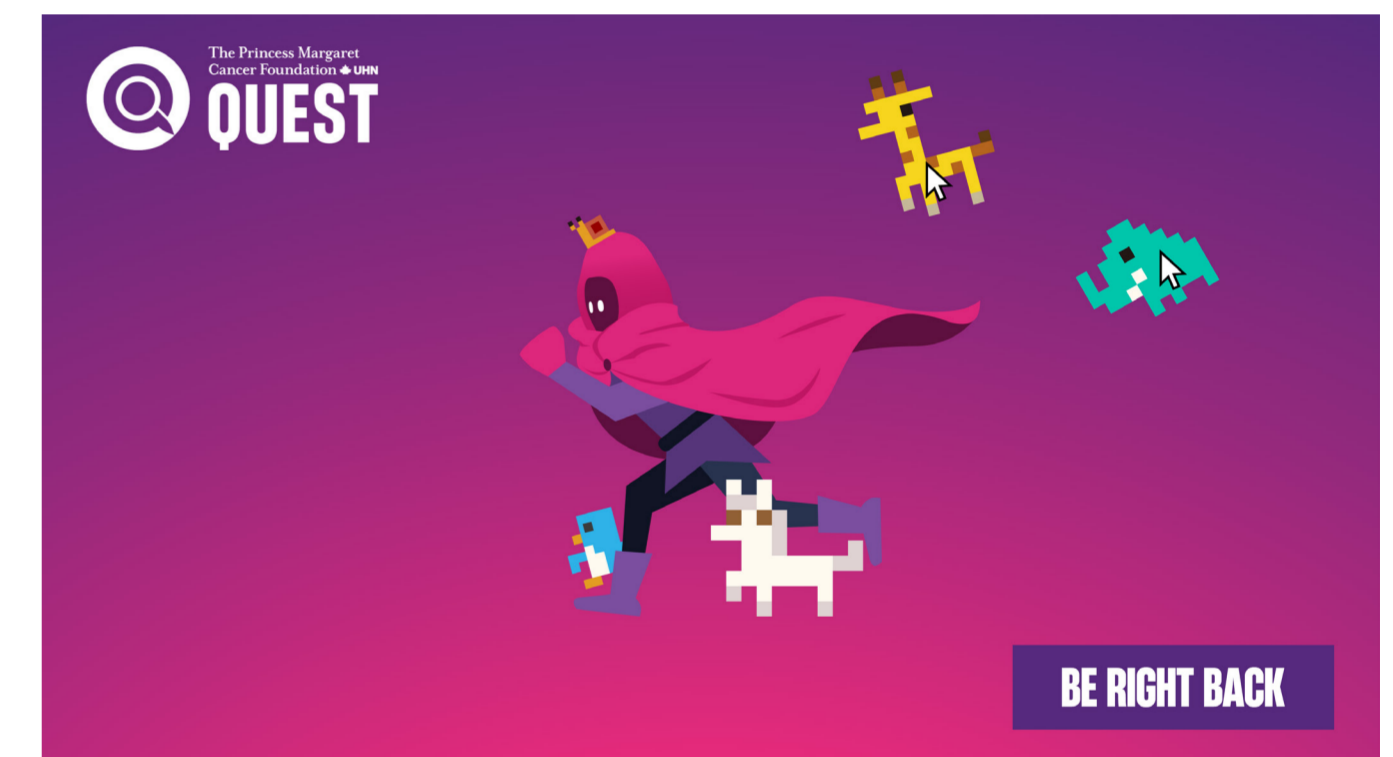
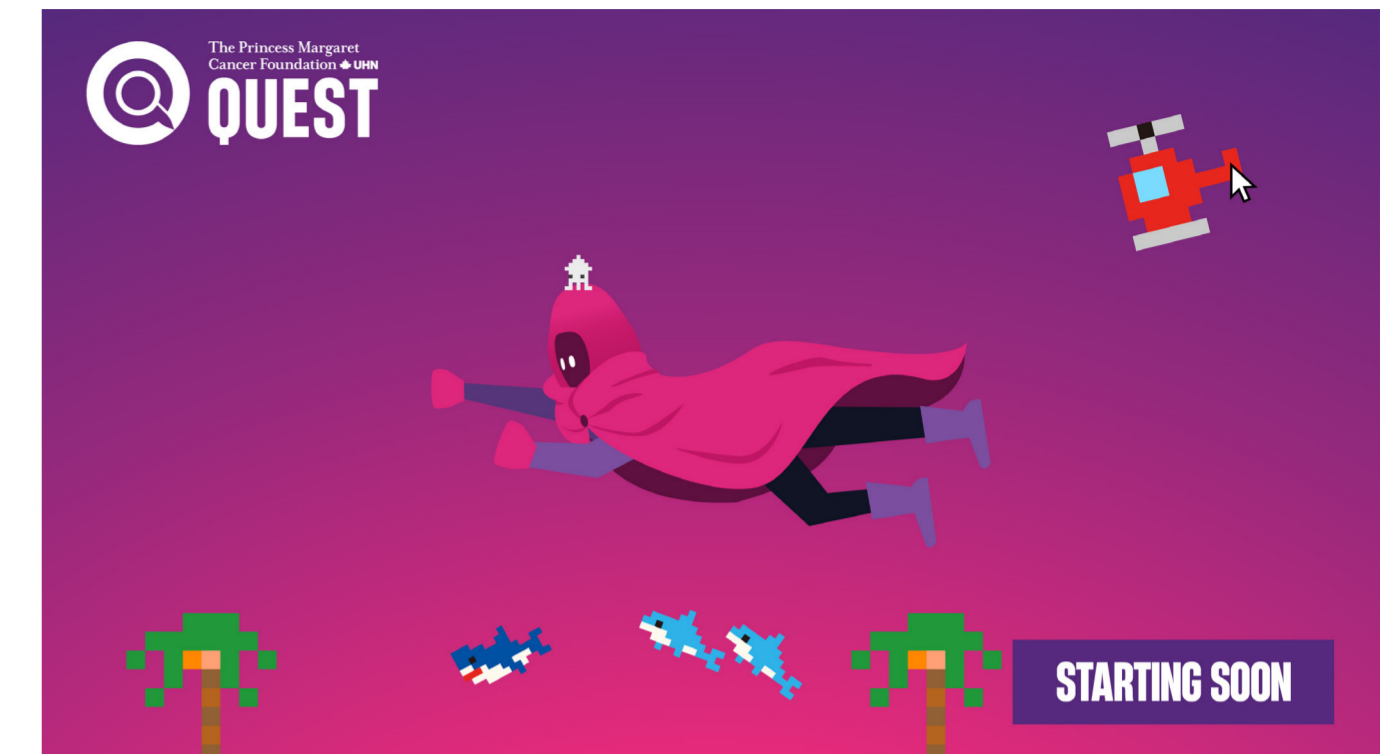
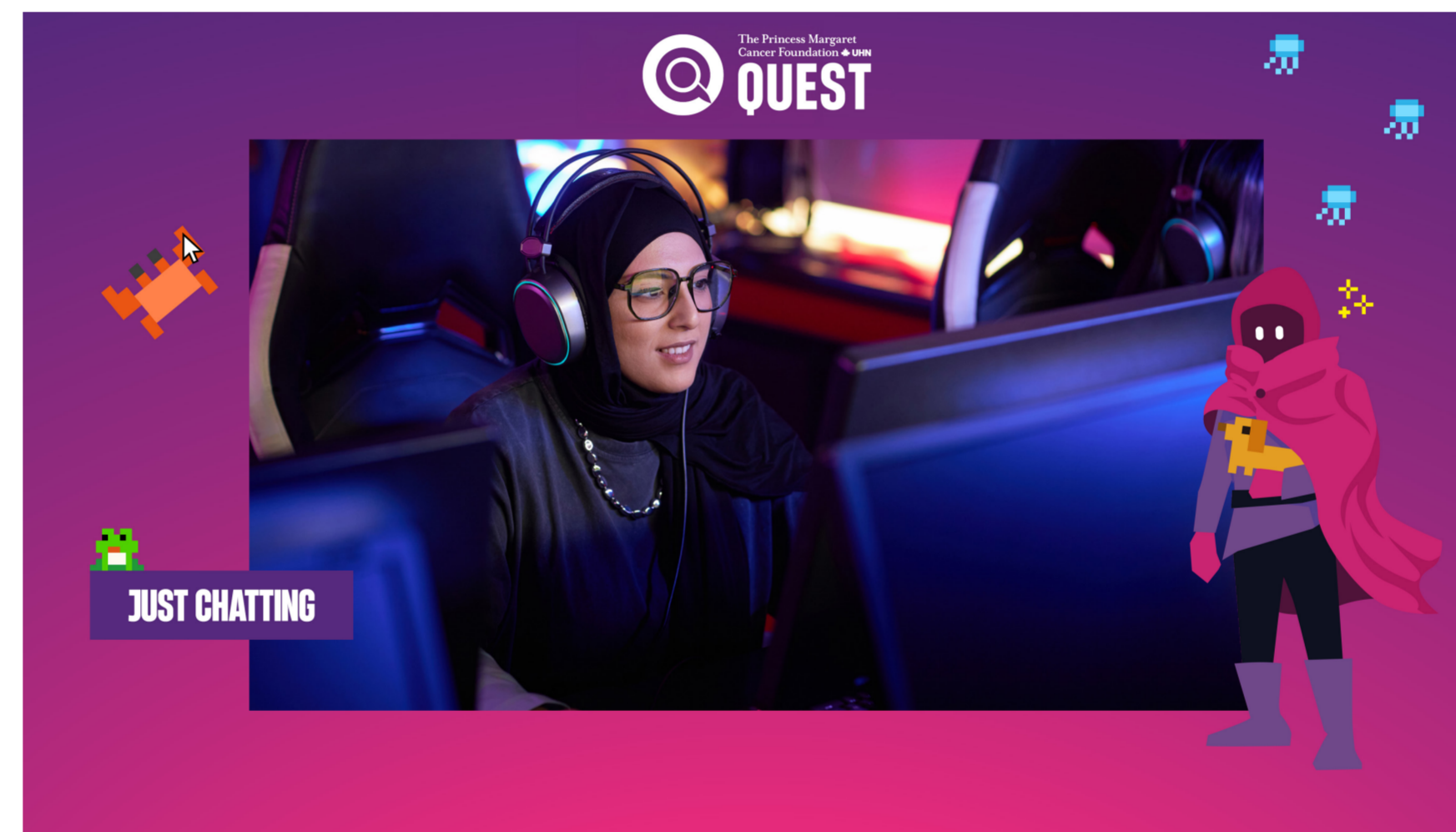


# STREAM OVERLAYS

WebM / MP4 file asset (animated) or PNG file asset. Each file is a separate Scene for OBS. For Just Chatting we highly recommend using the WebM file to place over your webcam. To use these assets:

- 1) Create a new scene in OBS and name it according to the scene you are using.
- 2) Create a new Source and select Media Source and name it according to the scene you are using.
- 3) Upload the WebM file under "Local File." Make sure you check mark ALL boxes on this page.
- 4) Repeat for each scene.
- 5) For the "Just Chatting scene, BE SURE to place the WebM scene OVER your web cam. Scale your camera as needed.

\*There are also static overlays as PNG files should you choose to not use the animated options.



# STREAM OVERLAYS

Remember to input the URL for the Progress Bar found within your Fundraising Portal.

Additionally, in the Fundraising Portal, you can grab a link to your donation page or download the button component to add to your stream.

Jordanas Testing Environment

Tour Badges My Account

DASHBOARD  
MY PAGE  
TEAM +  
DONATIONS +  
FOLLOW UPS  
SEND EMAILS +  
GET SOCIAL BETA  
FITNESS GOAL  
LIVE STREAMING

### Live stream to your fundraising page

Include overlays and a 'donate' call to action to your stream and watch your dollars grow.

#### STREAM SETUP

Select your streaming platform and add details below. The video will appear on your page when the stream is live.

Twitch Facebook Youtube

Username\*

Add Stream

#### FUNDRAISING OVERLAYS & WIDGETS

Add overlays to your broadcast software to show progress, recognize donors, and encourage giving while you stream.

Donate Button/Link +

Progress Bar -

**Progress Bar**  
Copy and paste the link into your broadcasting software to display your fundraising progress while you stream.

https://overlay.raai.sn/pt/Inbgczzm6ee Copy Link

View Preview

Jordanas Testing Environment

Tour Badges My Account

DASHBOARD  
MY PAGE  
TEAM +  
DONATIONS +  
FOLLOW UPS  
SEND EMAILS +  
GET SOCIAL BETA  
FITNESS GOAL  
LIVE STREAMING

### Live stream to your fundraising page

Include overlays and a 'donate' call to action to your stream and watch your dollars grow.

#### STREAM SETUP

Select your streaming platform and add details below. The video will appear on your page when the stream is live.

Twitch Facebook Youtube

Username\*

Add Stream

#### FUNDRAISING OVERLAYS & WIDGETS

Add overlays to your broadcast software to show progress, recognize donors, and encourage giving while you stream.

Donate Button/Link -

**Donation Link**  
Share this link to encourage viewers to donate.

https://prod.akaraisin.com/ui/jordanatestenviro/pledge/sponsor/s Copy Link

**Donation Button**  
Download the button, add it to your channel, and link it to the above URL.

Donate now Download

Progress Bar +

BACK TO EVENT SITE

# ON STREAM BANNERS

PNG assets. Place as an image source in OBS. (1) banner can be placed wherever works for your stream. (2) banner should be placed either across the top or across the bottom of your stream.

**Only use 1 of these banners on your stream.**



# TALKING POINTS – GENERAL

- Chat, I'm beyond hyped to be teaming up with The Princess Margaret Cancer Foundation Quest and helping to Carry The Fire for a world free from the fear of cancer.

- This year's The Princess Margaret Cancer Foundation Quest Ultimate Streamathon is here! I'm ready to do good. Are you guys prepared to join me on this Quest? Spam (emote) in chat if you are! Let's go!

- Not only are we raising funds for life-saving cancer research, but we're also spreading hope to those who need it the most.

- Your donations will go directly to the brilliant minds at The Princess Margaret who are advancing early detection, innovative treatments, and comprehensive support to create a world free from the fear of cancer.

- By supporting The Princess Margaret and the Quest, our community can bring brighter tomorrows to cancer patients around the world. Can we get a (emote) in the chat for that?

- I must give a special shout out – to all of you! Every bit of support you've shown during this stream has gone straight to The Princess Margaret, supporting the advancement of life-saving cancer and care.

- It's amazing that our stream, and gaming in general, can be a force for good!

- Remember, this is not just any event – it's a chance to make a real difference! So, spread the word, and show the world the power of our Twitch community!

# TALKING POINTS – FUNDRAISING DOLLARS AT WORK

– Did you know that The Princess Margaret revolutionized the world's understanding of cancer?

– Back in 1963, two amazing scientists, Till and McCulloch from Princess Margaret Cancer Centre, made a ground-breaking discovery – the stem cell! This little cell has the power to renew and repair tissues in our bodies, and their work laid the foundation for regenerative medicine worldwide. So inspiring!

– Did you also know that The Princess Margaret also pioneered immunotherapy, a less-toxic alternative to chemo?

– In 1983, Dr. Tak Mak pulled off something amazing – he cloned the T-Cell Receptor! This ground-breaking discovery paved the way for safer and more effective cancer treatments through immunotherapy.

– In 2018, The Princess Margaret developed a blood test with the potential to save the world! Dr. Daniel De Carvalho and Dr. Scott Bratman developed a simple blood test that can detect various types of cancer before symptoms even appear!

– Did you know that The Princess Margaret is home to one of the world's largest clinical trials programs? They test therapies to benefit cancer patients around the world.

– The Princess Margaret is using A.I. to make real progress! Dr. Tom Purdie and his colleagues were the first in the world to harness artificial intelligence to improve radiation cancer therapy treatment planning, improving accuracy and outcomes for patients.

– The Princess Margaret uses futuristic tech to see cancer in a new light! Dr. Gang Zheng developed unique nanotechnology to make tumours glow, giving patients the potential to receive information in real-time on how their cancer is responding to treatment.

– Did you know that the world sends their best to learn from The Princess Margaret? They are training the next generation of global cancer leaders. Partnering with 500 leading cancer institutes in 107 countries, they are one of the world's largest hubs of cancer knowledge and talent!

– The Princess Margaret literally finds what cannot be seen. In 2014, Dr. John Dick discovered that some patients are pre-disposed to leukemia and cardiovascular diseases, helping to identify patients at risk of cancer and heart disease before patients even show symptoms of these illnesses.

# THANK YOU

